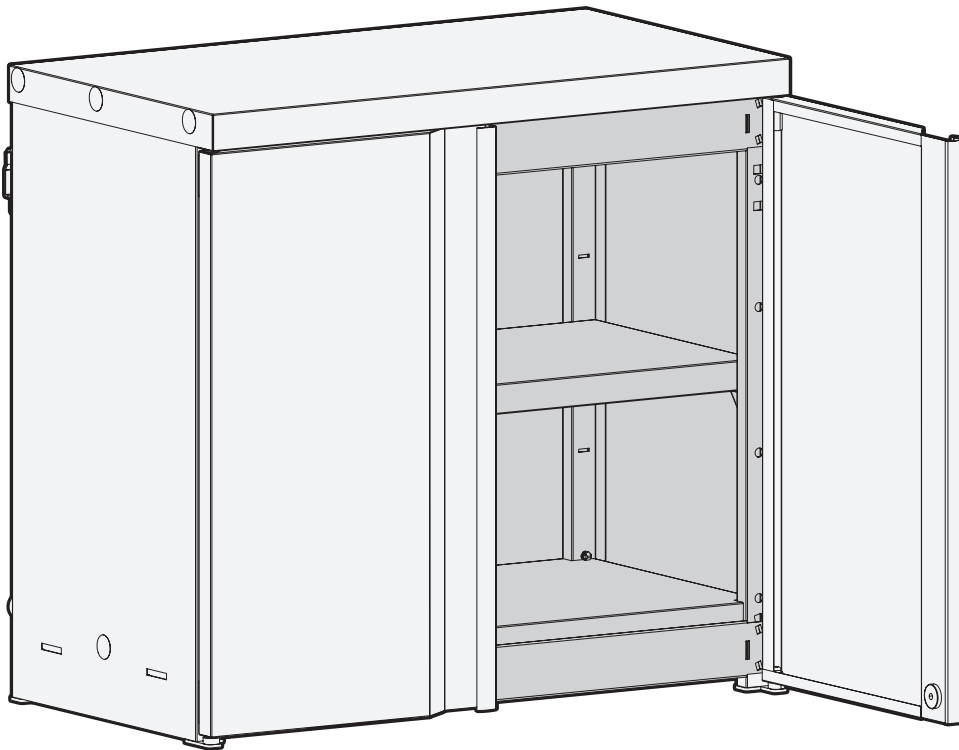


Assembly Guide

Wall Cabinet

Model# RTA281426-BLK



EDSAL MANUFACTURING CO, LLC
1555 W. 44TH STREET
CHICAGO, IL 60609
www.edsal.com

CONTENTS

CONTACT US.	2
SAFETY INFORMATION	3
SPECIFICATIONS	3
WARRANTY	3
PACKAGE CONTENTS.	4
PRE-ASSEMBLY	5
ASSEMBLY	5
MAINTENANCE AND CARE.	12
CUSTOMER FEEDBACK SURVEY	12
PARTS LIST	13

CONTACT US

Questions, problems, missing parts? Contact us directly for assistance:
7 a.m. - 5 p.m., CST, Monday-Friday

Chat: www.edsal.com
Email: support@edsal.com
Phone: 1-773-475-3131

To obtain replacement parts please provide:

Model Number: _____

Description: _____

Date of Purchased: _____

THANK YOU FOR YOUR PURCHASE

SAFETY INFORMATION

- This product is intended for indoor use only.
- This product is not designed for commercial or industrial usage.
- Use at least two people to assemble and move this product. Failure to do so can result in personal injury or product damage.
- Any assembly or maintenance of this product must be carried out by adults only.
- Keep the product on a level surface. The product could become unstable and may tip over if stored or moved on an uneven surface, which may cause product damage, personal injury, or death.
- Do not leave children unattended near this product. Cabinet can tip over if improperly opened.
- DO NOT stand on this product or use it as a ladder or scaffold.
- DO NOT alter this product in any manner.
- DO NOT put anything on the top panel of this product.
- Do not exceed the maximum load capacity for each shelf and the entire unit.
- Retain this manual for future reference.



Warning: To reduce the risk of serious injury, read and follow the safety instructions before assembling and using this product.

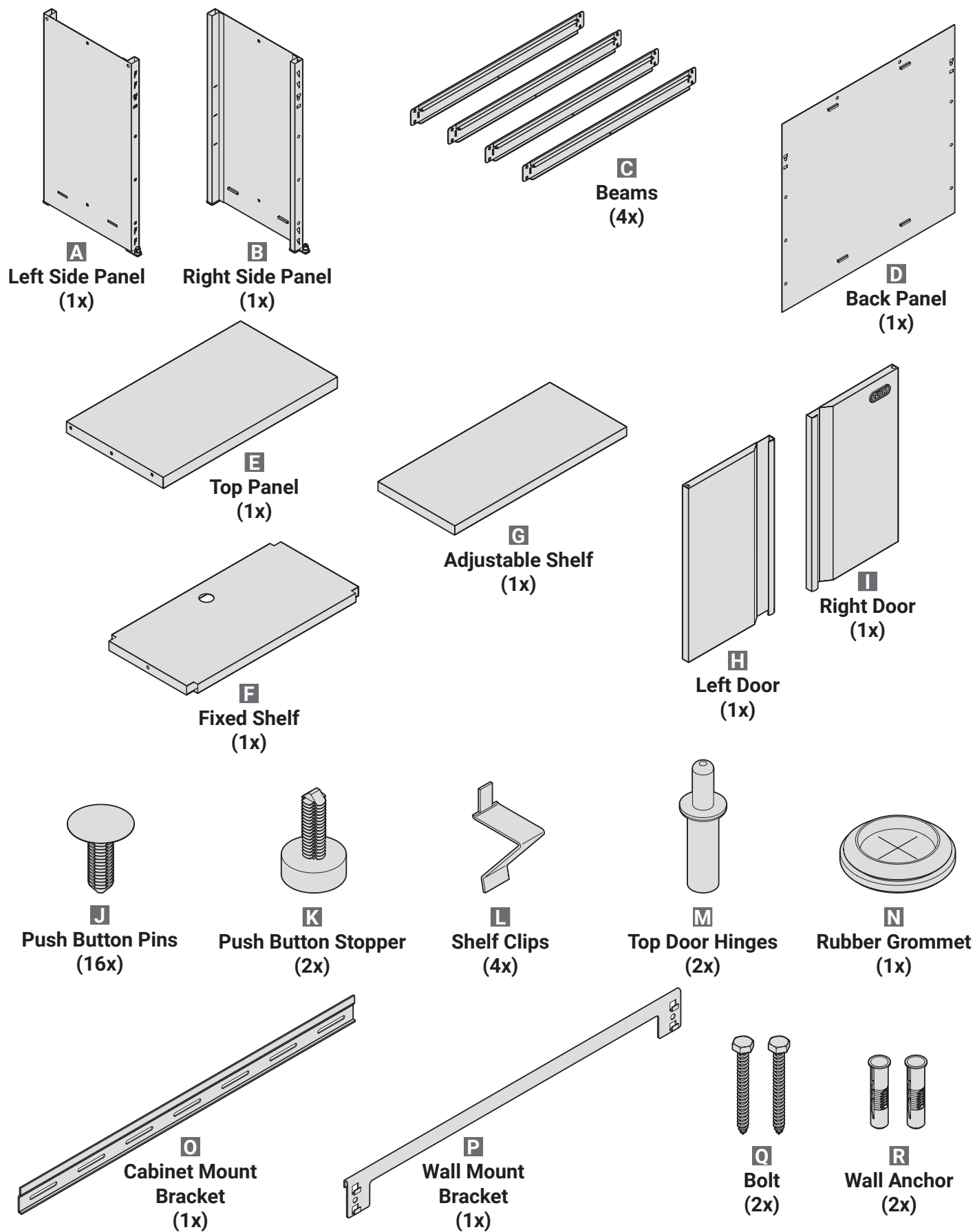
SPECIFICATIONS

- Cabinet Dimensions: 28 in. W x 14 in. D x 26 in. H
- Maximum load capacity for each shelf level: 150 lbs. / 68 kg
- Maximum load capacity for the entire unit: 300 lbs. / 136 kg

WARRANTY

Edsal Manufacturing Company, LLC products are guaranteed for a period of one (1) year from the date of purchase. The SOLE AND EXCLUSIVE REMEDY for such defects is the repair or replacement of a defective product or parts thereof by Edsal Manufacturing Company, LLC or, at Edsal Manufacturing Company, LLC option, refund of the purchase price upon return of the item to Edsal Manufacturing Company, LLC. This warranty shall not apply in the event the products are damaged as a result of misuse, neglect, accident, moisture, improper application, improper assembly, or assembly not in conformity with the instructions of Edsal Manufacturing Company, LLC, failure to abide by safety precautions prescribed by Edsal Manufacturing Company, LLC or modification or repair by persons not authorized by Edsal Manufacturing Company, LLC.

PACKAGE CONTENTS

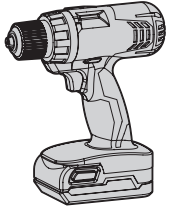


PRE-ASSEMBLY

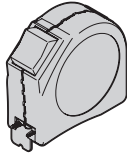
- Begin by placing the package on a flat surface. Use a rug to protect the cabinet and floor.
- Remove all parts and dispose/recycle all packaging materials.
- Check to make sure all parts are present.

Tools Required (not included)

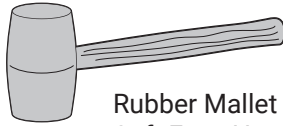
Note: If using a hammer, a cloth should be used over the parts to protect the paint.



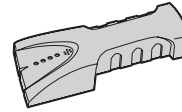
Cordless Drill



Tape Measure



Rubber Mallet or
Soft Face Hammer



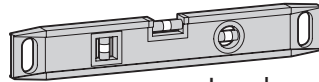
Stud Finder



Socket



Pencil



Level



Drill Bit



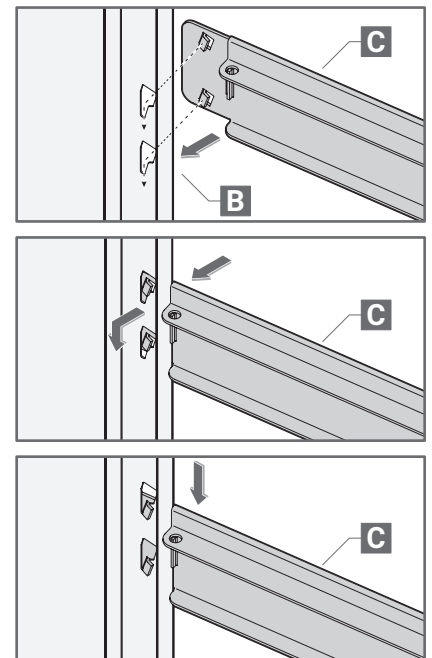
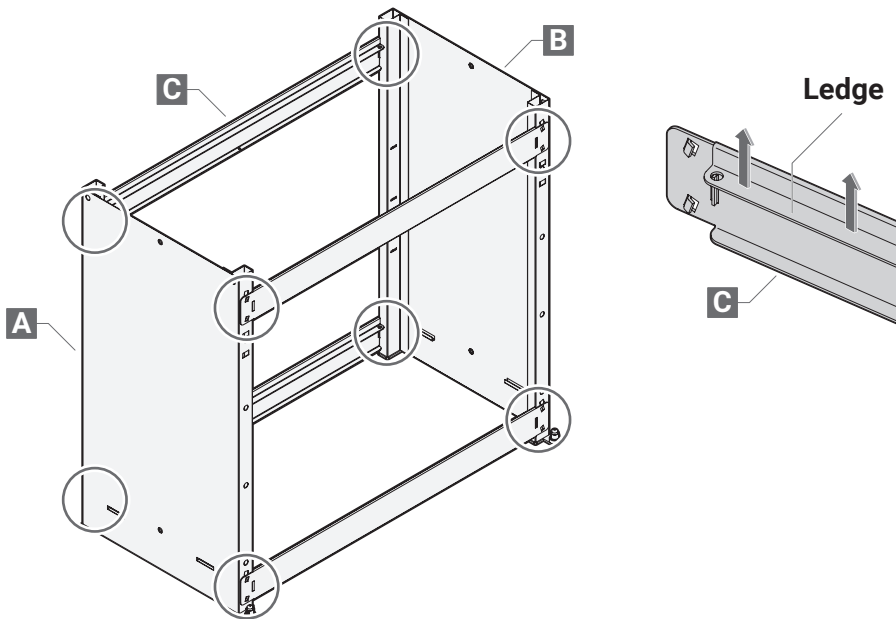
Open End Wrench

ASSEMBLY

STEP 1 Install Beams

- Assemble the bottom two beams (C), and then the top two beams (C).
- Insert the two end tabs on each side of the beam into the two slots of each side panel. Ensure the tabs are facing down and the ledge is facing up.
- Using a rubber mallet or a hammer covered with a cloth lightly tap downward on the beams to secure the tabs.
- If the beams pop up press the tabs inward for a tighter fit.

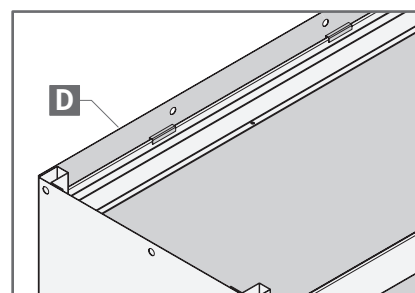
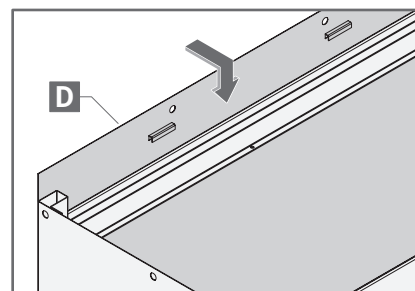
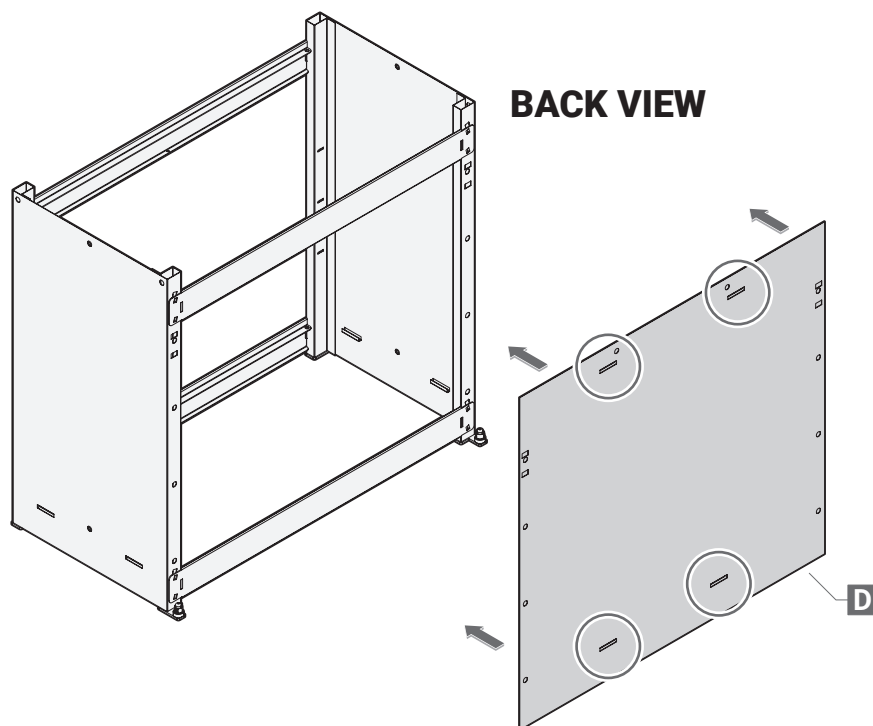
Tip: Recommended two-person assembly for this step.



STEP 2 Install Back Panels

- Attach the Back Panel (D) onto the back of each beam by the tab hooks on the top and bottom of the panel (D).
- Ensure all the tab hooks are fully attached to each beam.

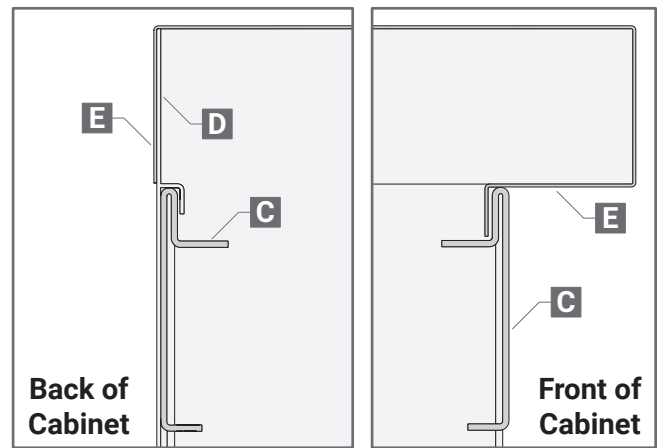
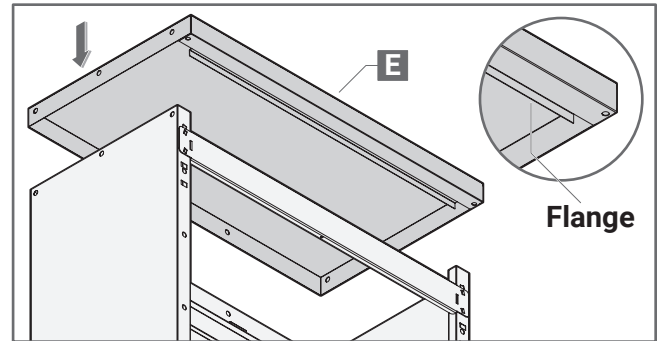
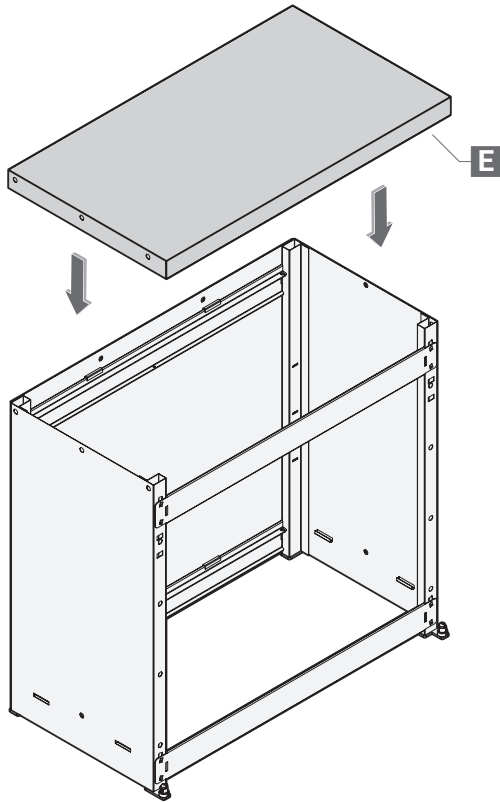
Note: There are four total inner tab hooks per back panel, located at the top and bottom to attach onto each beam level.



STEP 3 Install Top Panel

- Place the Top Panel (E) over the side and back panels with the flange facing the front and be seated behind the Beam (C).
- Make sure the back edge of the Top Panel (E) is placed on the outside of the Back Panel (D).

Note: The long flange must face the front and be seated behind the beam.

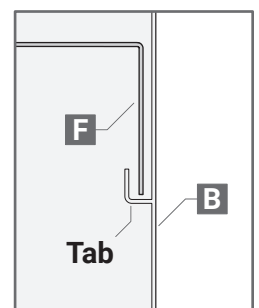
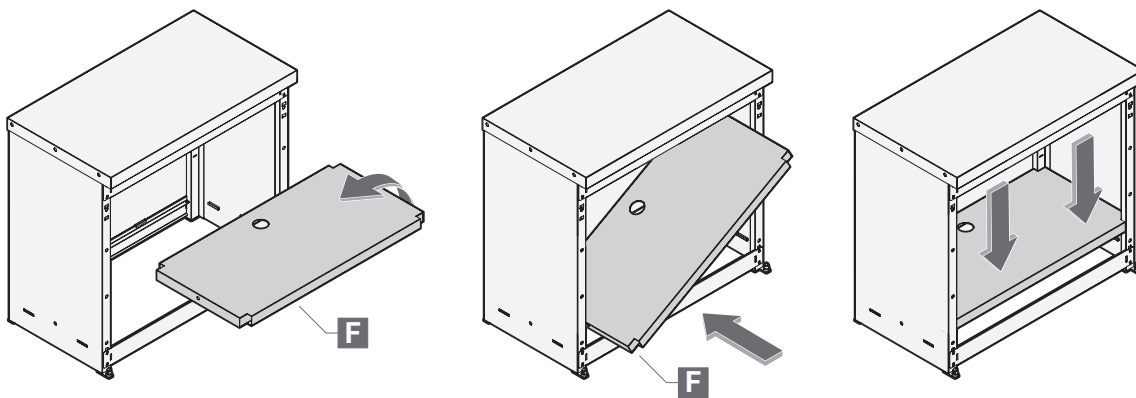


STEP 4 Install Shelves

Install Fixed Shelves

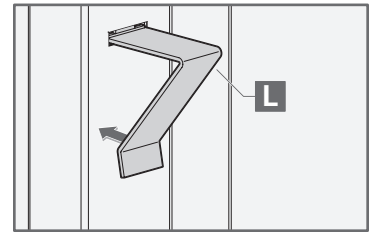
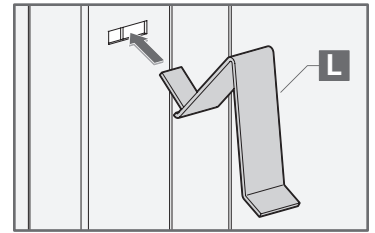
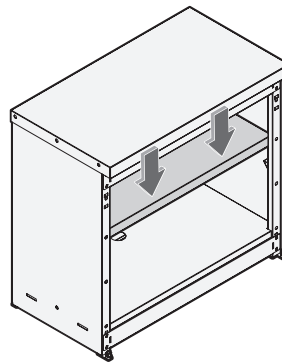
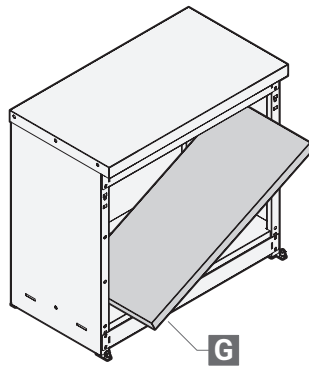
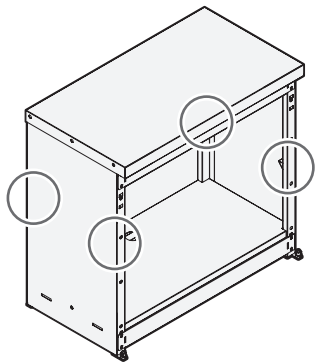
- Insert the Fixed Shelf (F) in the bottom at an angle.
- Lower the shelf onto the beams and the side panel tabs. Press the side panels inwards from the outside to engage the tabs on the side panels.
- Press down gently to secure the shelf.
- The shelf should sit at a leveled position.

Tip: Insert shelves into the cabinet at an angel.



Install Adjustable Shelves

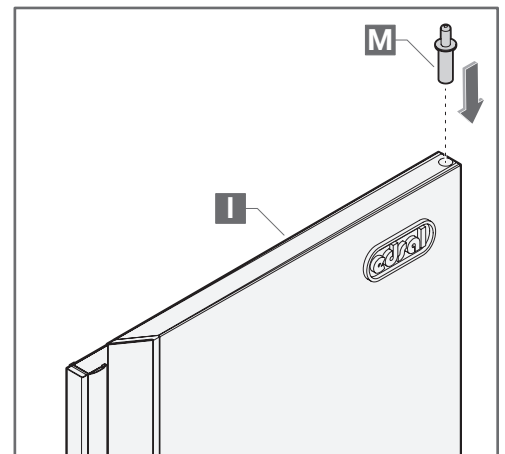
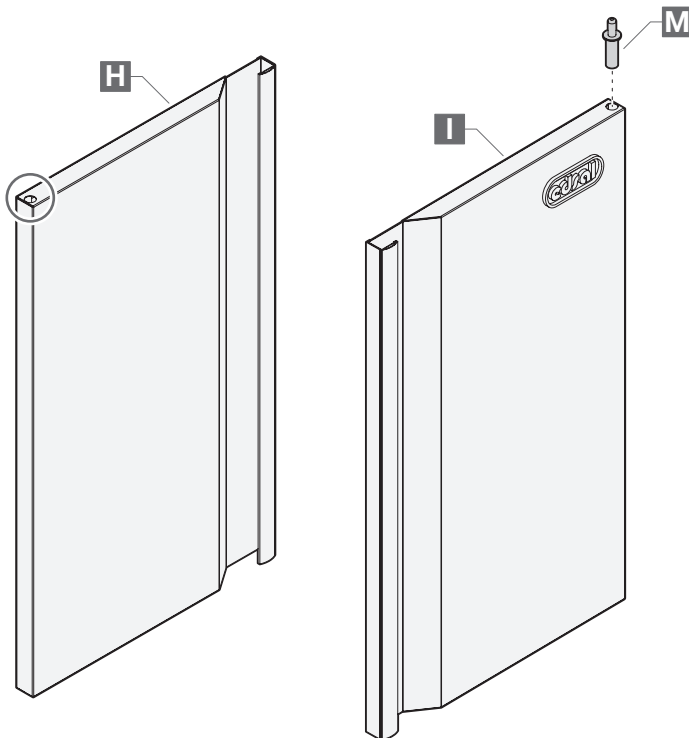
- Insert the Shelf Clips (L) into the slots at the same height on all four sides.
- Insert the Adjustable Shelf (G) at an angle then lower the self on the shelf clips.
- If the shelf does not sit level adjust the clips until the clips are at the same height.



STEP 5 Install Top Door Hinges

- Insert the Top Door Hinges (M) into the holes on the top of the Left Door (H) and the Right Door (I).

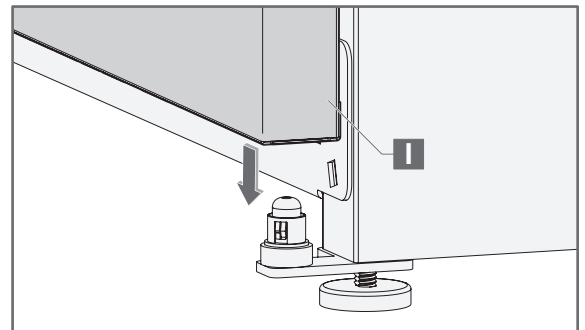
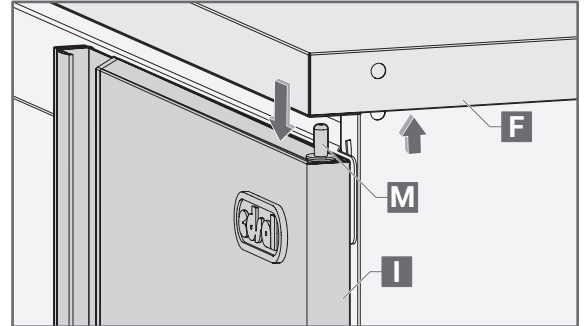
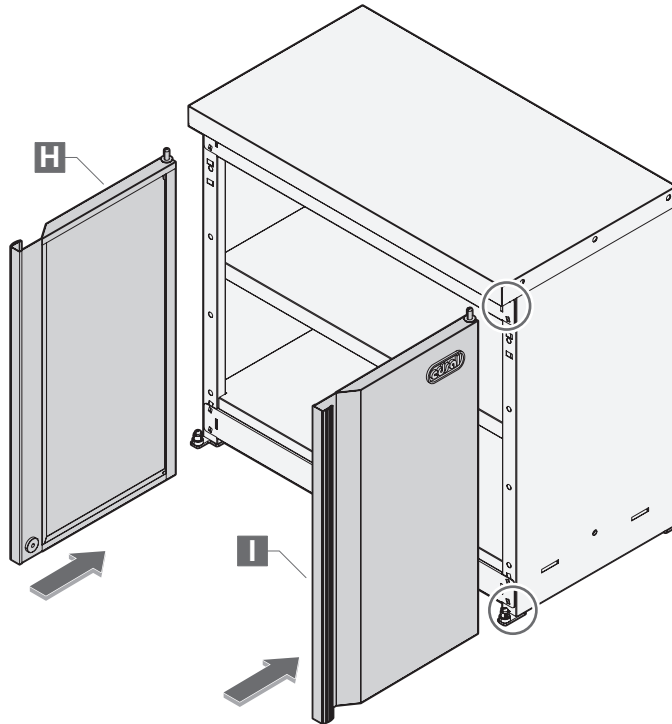
Note: The door hinges should be placed with the spring loaded side facing up.



STEP 6 Install Doors

- Install the Left Door (H) and Right Door (I) starting from the bottom.
- Locate the hole at the bottom of the door.
- Place the hole over the hinge located on the bottom of the side panel.
- Insert the top door hinge into the top panel by pressing down on the hinge and lifting up the top panel slightly.
- Push the top panel down to secure the door.

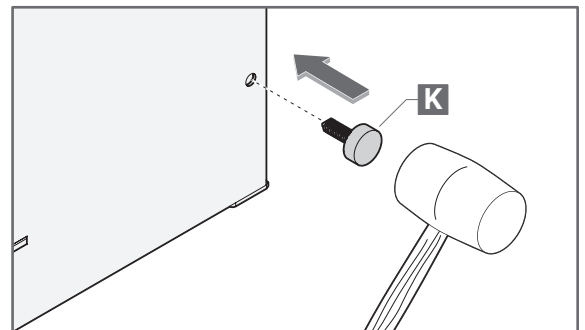
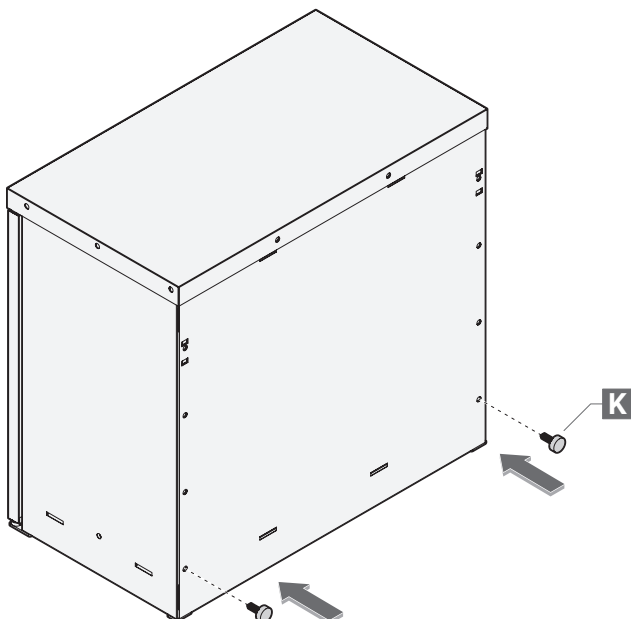
Tip: The top door hinge is spring loaded and can be pressed down to help insert into the top panel hole.



STEP 7 Install Push Button Stoppers

- Ensure all holes from the top panel, back panel, and side panels are aligned.
- Using a rubber mallet gently tap the two Push Button Stoppers (K) into the bottom two holes.

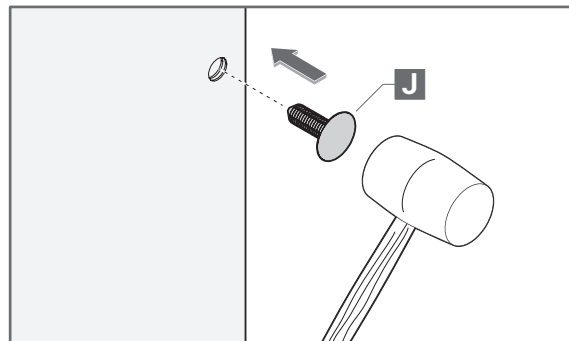
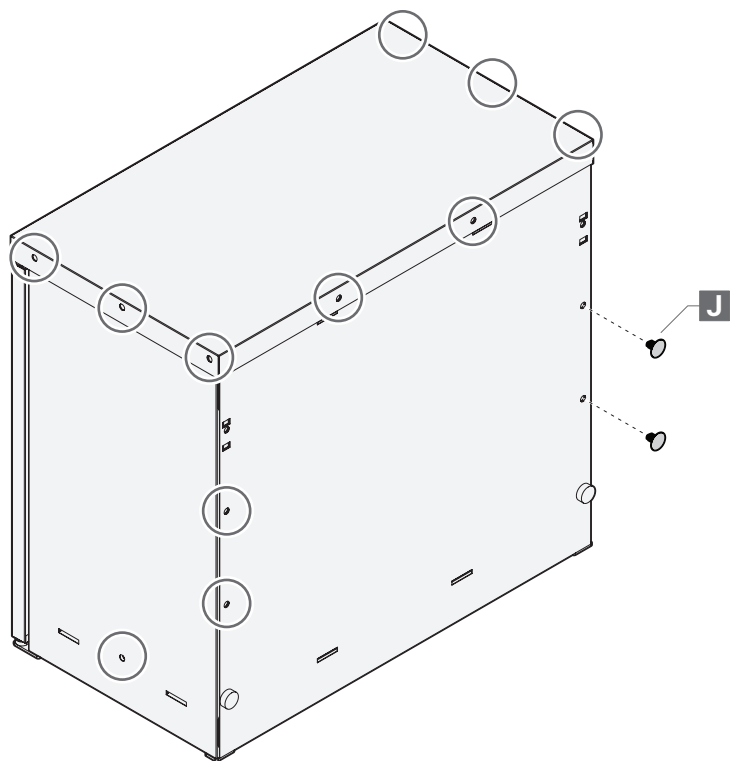
Tip: If the holes are not all aligned, try slightly nudging the panels until fully aligned.



STEP 8 Install Push Button Pins

- Ensure all holes from the top panel, back panel, and side panels are aligned.
- Using a rubber mallet gently tap the fourteen Push Button Pins (J) into the holes.

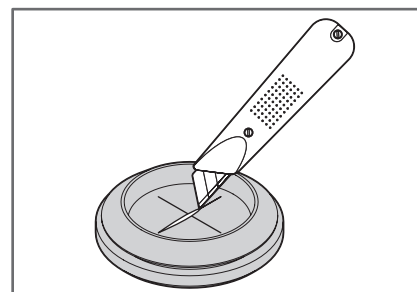
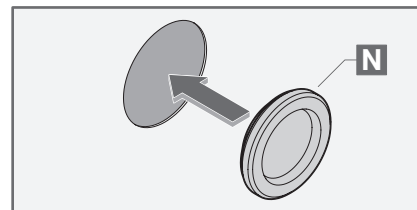
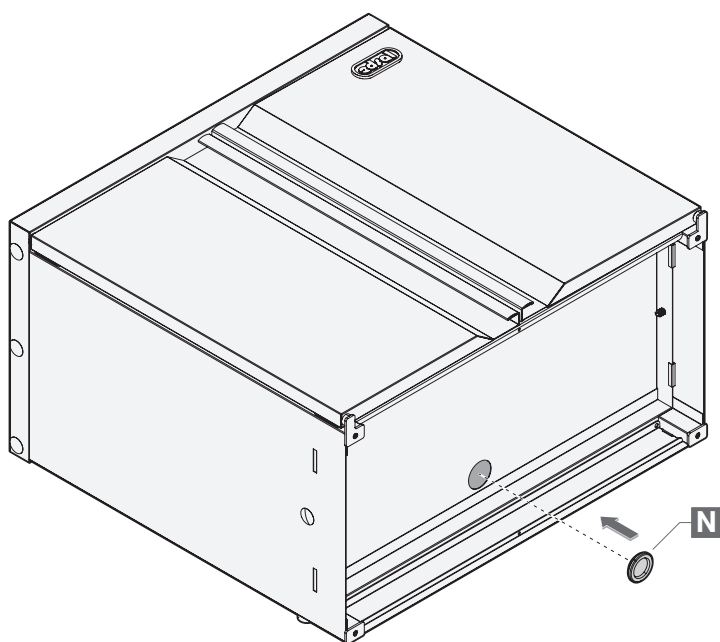
Tip: If the holes are not all aligned, try slightly nudging the panels until fully aligned.



STEP 9 Install Rubber Grommet

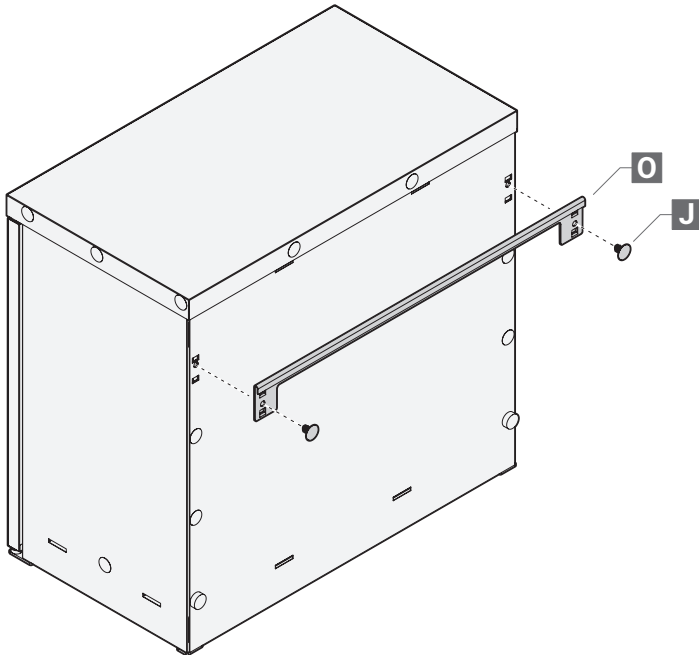
- Install the Rubber Grommet (N) into the hole located on the bottom of the unit in the bottom of the shelf.

Tip: Puncture a hole through the "X" located on the grommet to allow for easy cords access.

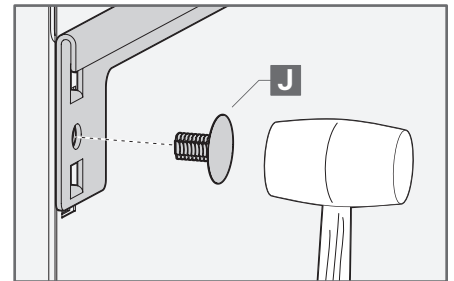
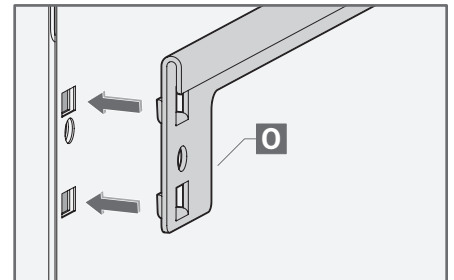


STEP 10 Install Cabinet Mount Bracket

- Install the Cabinet Mount Bracket (O) by inserting the two tabs located on each end of the cabinet mount bracket into the two rectangular slots located on both sides of the back panel. The holes of the cabinet mount bracket and back panel should be aligned.
- Insert two Push Buttons Pins (J) into the holes of the cabinet mount bracket and the back panel. Use a rubber mallet to tap in the push button pins until fully engaged.

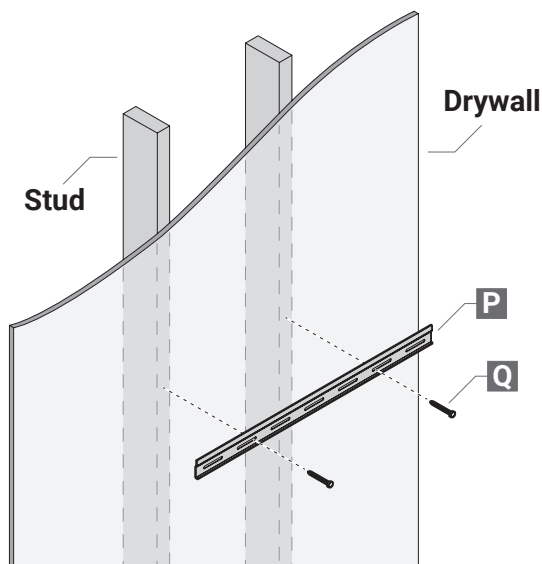


Tip: When installing, lean the top of the cabinet inward so the cabinet mount bracket flange can catch and hook onto the flange of the wall mounted brackets to fully interlock.

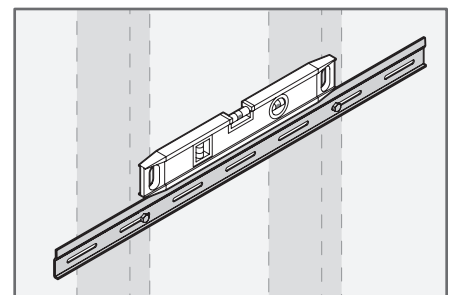
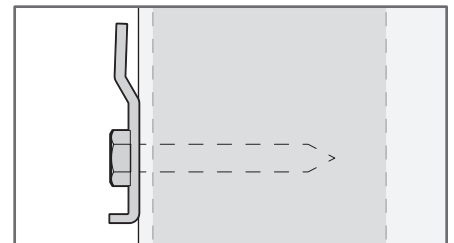


STEP 11 Install Wall Mount Bracket

- Using a stud finder, find the studs in the wall at the desired location.
- Install the Wall Mount Bracket (P) using the two Bolts (Q) and drill directly into the center of the studs. Use a level to ensure the wall mount bracket is level.



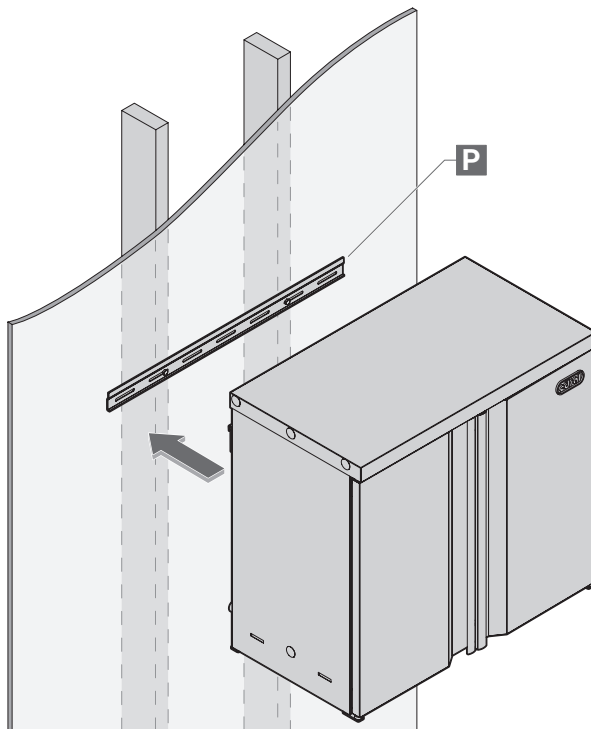
Note: If studs are not located at the desired location, use the Wall Anchors (R) and the Bolts (Q) to install into the dry wall. Do not attempt to install directly into drywall without using the Wall Anchor (R).



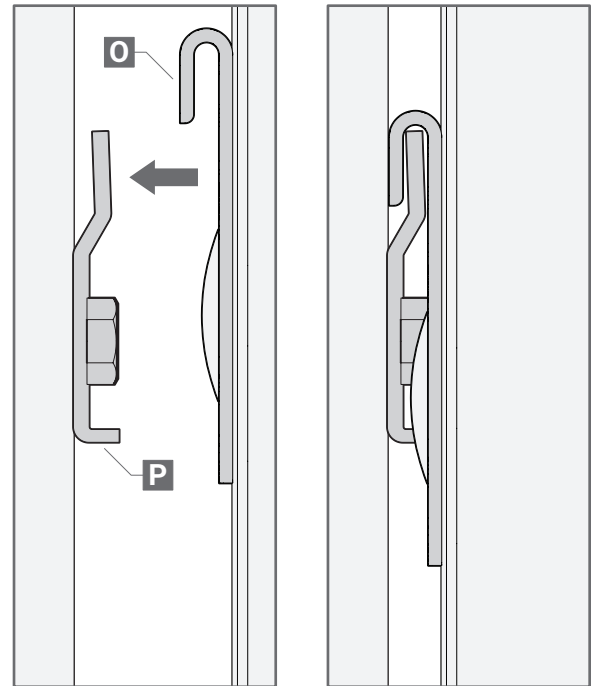
STEP 12 Install Wall Mount Cabinet onto Wall Mount Bracket

- Gently lift the wall cabinet on both ends then hook the cabinet mount bracket on the flange of the wall mount bracket.
- Check both ends to make sure the cabinet mount bracket is fully hooked over the flange of the wall mount bracket.

Tip: You can slide the cabinet back and forth to get it to the correct location.



SIDE VIEWS



MAINTENANCE AND CARE

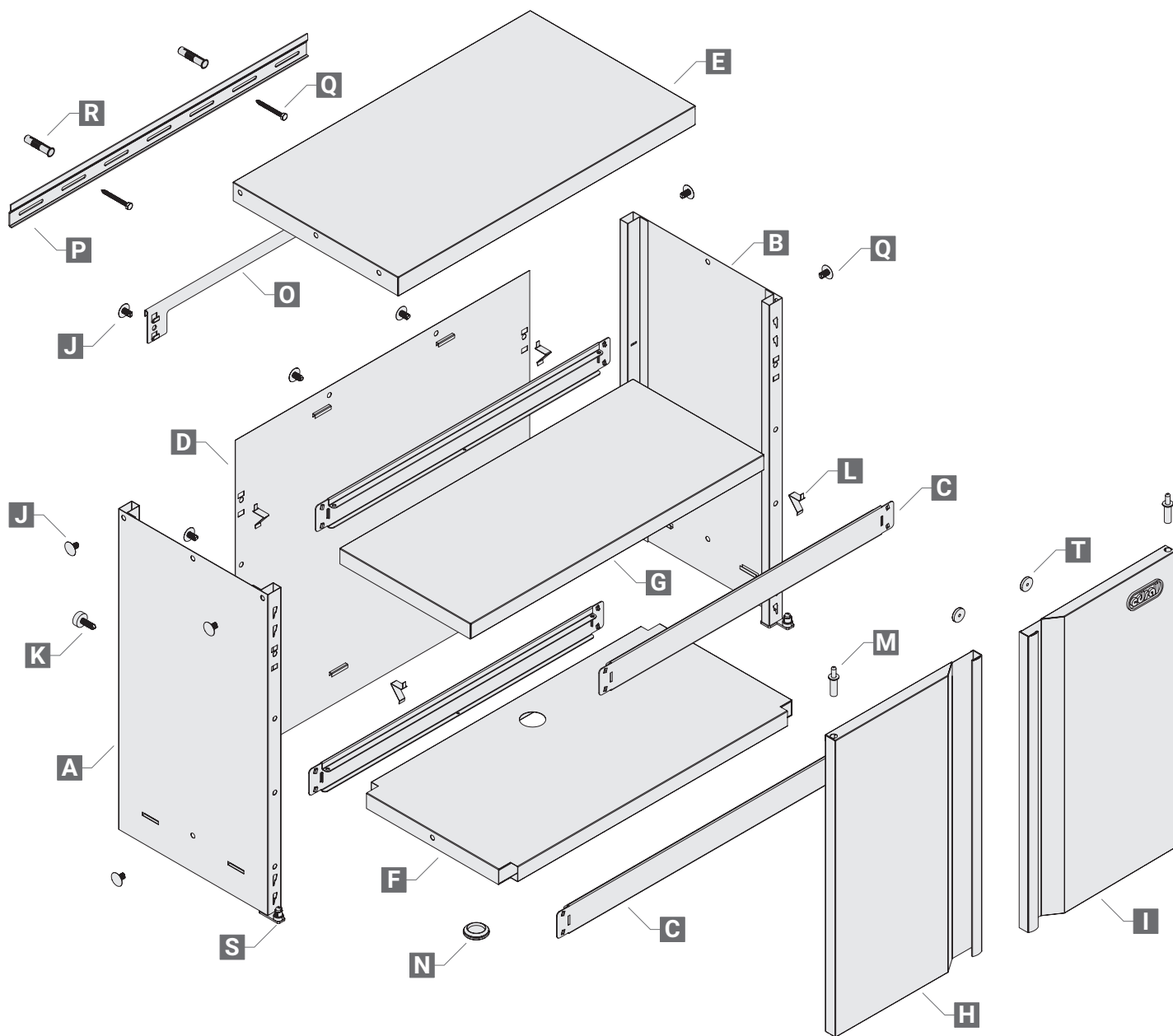
- Periodically check to make sure the beams tabs are secure into the slots of the side panels.
- Use a dry or slightly dampened, clean cloth to wipe down the cabinet if needed.

CUSTOMER FEEDBACK SURVEY

Scan the QR code below to take a short survey about this product.



PARTS LIST



Part	Description	Qty	Part Number
A	Left Side Panel	1	AAS2614-L
B	Right Side Panel	1	AAS2614-R
C	Beam	4	N2R-BM28-BLK
D	Back Panel	1	ABK2826
E	Top Panel	1	AAT2814
F	Fixed Shelf	1	ASF2814
G	Adjustable Shelf	1	ASA2814
H	Left Door	1	ADR2614-L
I	Right Door	1	ADR2614-R
J	Push Button Pin	14	RTA-PUSHBUTTON
K	Push Button Stopper	2	RTA-PLASTICSTOPPER
L	Shelf Clip	4	SCLIP-STD

Part	Description	Qty	Part Number
M	Top Door Hinge	2	HNG-TOP
N	Rubber Grommet	1	RTA-RUBBERGROMMET
O	Cabinet Mount Bracket	1	RTAFC-CABMOUNT
P	Wall Mount Bracket	1	RTAFC-WALLMOUNT
Q	Bolt	2	RTA-ANCHORKIT-BOLT
R	Wall Anchor	2	RTA-ANCHORKIT-ANCHOR
S	Bottom Door Hinge (preassembled on side panels)	2	RTAFRONTLVR/ RTAFRONTLVL
T	Door Magnet (preassembled inside of doors)	2	RTAMAGNET



EDSAL MANUFACTURING CO, LLC | 1555 W. 44TH STREET | CHICAGO, IL 60609 | www.edsal.com